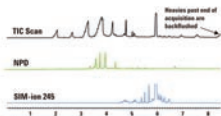


Rapid Drug Screening

Obtaining 3x the information in half the time or less, using GC/NPD/MSD with simultaneous SIM/Scan.

An Agilent Capillary Flow device is used to acquire NPD and MSD data simultaneously. This eliminates the need for a separate NPD screening run on a different GC; backflushing further reduces cycle time. Simultaneous SIM/Scan is used to screen for select low-level drugs, eliminating the need for a separate SIM run.

Overall cycle time is reduced by more than 55%. An existing 6890 GC/MSD method is made twice as fast using a 240V oven. Similar results were also achieved using a 120V oven with the new option for the 7890A high-speed GC/MSD oven. Deconvolution Reporting Software (DRS) further enhances throughput by reducing data interpretation time.

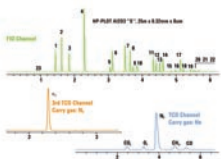


Analysis of Refinery Gases

Faster, high-resolution analysis of complex refinery gas samples using 3 channels of simultaneous detection.

The Agilent 7890A GC now supports an optional 3rd detector (TCD). In this analysis, the GC is configured to run three parallel channels; all three detectors collect data at the same time. Complete analysis time of inert gases and hydrocarbons to n-C6 can be achieved in 6 minutes.

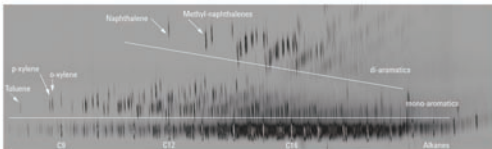
NGA, RGA Analysis Under 6 min, > 3 fold faster



Comprehensive GC Flow Modulation

Capillary Flow Technology enables GC x GC analysis of extremely complex samples—without the need for cryogen.

To date, available GC x GC systems require complicated and costly cryo-focusing techniques. The Agilent 7890A GC uses Capillary Flow Technology to enable flow modulation without the need for cryogen. This analysis of diesel fuel shows the normal boiling point distribution in the first dimension and functional group clusters in the 2nd dimension.



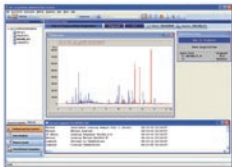
GC software that fits your workflow and your applications—perfectly.

Agilent GC software makes it easy even for non-expert operators to take advantage of all the advanced capabilities of the new Agilent 7890A system. From the friendly, familiar GC and GC/MSD ChemStation and EZChrom Elite chromatography data systems to our groundbreaking new Lab Monitor & Diagnostic Software, you'll find everything designed to help you make the most of every run, and every workday.

If your 7890A GC will be used in a regulated environment, Agilent software can help there, too, with comprehensive features to address the strict regulatory, certification and quality control requirements of your industry.

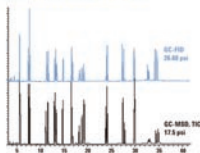
With the 7890A GC, all of our data systems provide the same level of support

Whether you're using the GC ChemStation, GC/MSD ChemStation, EZChrom Elite or the enterprise-wide Agilent 0L system, you can be confident of complete support for your 7890A GC. Just as with our earlier 6890 hardware platform, each of these systems offers the same ease of use for 7890A method development—and fully supports Lab Monitor & Diagnostic Software, as well as productivity improvement with ALS overlap and backflush.



Agilent's industry-leading ChemStation chromatography data system lets you display, calibrate and report data from up to four signals—without having to synchronize separate runs and merge results. This is especially efficient when you need to set up and report complex analyses.

MSD Method Locked to FID Method (Mixture of 25 Pesticides)



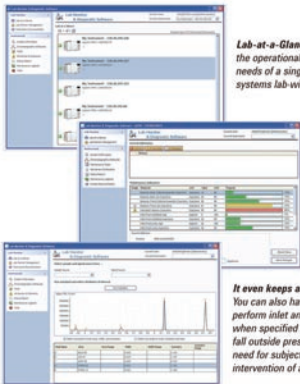
Different Detector, Different Location, Different Operator—Same Results

Retention Time Locking (RTL) software is a powerful productivity tool that lets you reproduce exactly the same results on multiple Agilent GC or GC/MSD systems—configuration to configuration, location to location, operator to operator. This revolutionary Agilent technology allows retention times to be reproduced within hundredths, and even thousandths, of a minute. RTL enables you to more easily and accurately identify peaks, increase sample throughput, reduce the risk of noncompliance, enhance confidence in analytical results—as well as lower your operating costs.

Lab Monitor & Diagnostic Software maximizes uptime by heading off problems before they happen.

Agilent's innovative Lab Monitor & Diagnostic Software continuously monitors a single or multiple Agilent GC and GC/MSD systems in real time to alert you to GC maintenance needs and instrument problems—before your results go bad.

The software also keeps track of injections, hours of operation and other user-specified parameters, and lets you know when it's time to change out consumables or perform basic upkeep tasks, via popup, email or phone text message. It also makes it quick and easy to perform automated diagnostic routines that help to verify proper instrument performance.



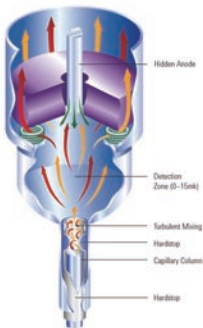
Lab-at-a-Glance feature lets you view the operational status and maintenance needs of a single system or multiple systems lab-wide.

Is it time to change columns or inlet liners? Resource counters and progress bars provide instant visual indication of preventive maintenance needs. So you can be sure you're getting maximum usage from all your consumables.

It even keeps an eye on the results. You can also have the software alert you to perform inlet and/or column maintenance when specified chromatographic attributes fall outside preset windows—without the need for subjective interpretation or the intervention of a highly skilled chemist.

Ready for anything your lab can throw at it. Including the future.

The modular, fully automated Agilent 7890A GC system includes the industry's widest selection of inlets, detectors, columns, consumables and sample introduction choices—in fact, everything you need to keep your lab up and running at peak productivity.



Highest productivity ECD in the business

Agilent's Electron Capture Detector (ECD) combines unprecedented sensitivity and linearity with ruggedness and reliability. So you don't have to concentrate extremely dilute samples, or dilute high-concentration samples to stay within range.

Full dynamic range FID

State-of-the-art digital electrometer enables a linear dynamic range of 10⁷, seamlessly integrated into a single run.

Sensitive and selective element detection

Agilent offers a wide variety of element-sensitive detectors, including a Flame Photometric Detector (FPD) which has been recently improved and is 5x more sensitive for sulfur and 10-15x more sensitive for phosphorous. Sulfur Chemiluminescence Detectors (SCD) provide the highest sensitivity and selectivity for demanding applications.



Looking for the perfect productivity partner for your Agilent 7890A GC?

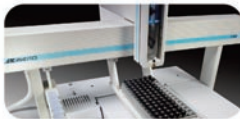
Add an Agilent 7883 Series Automatic Liquid Sampler. Offering the fastest injection times of any GC autosampler, greater solvent capacity, multiple sampling options, dual simultaneous injection and more, the 7883 ALS is ready to go to work.





Agilent G1888 Headspace Sampler adds to your analysis capabilities

Automatically introduce volatile compounds from virtually any sample matrix directly into a GC or GC/MS. An inert sample pathway provides superior chemical performance without analyte degradation or loss.



Boost your lab's output with automated sample preparation

Choose the versatile CombiPAL sample injector for liquid injection, headspace and solid-phase microextraction (SPME). The economical GC PAL platform can be configured for liquid injection only, but offers many of the other capabilities of the CombiPAL including large volume injection (LVI), multiple vial sizes and extended sample vial capacity.

High performance Agilent J&W GC columns and supplies to meet every analytical need.

Agilent GC consumables, including our J&W columns, are designed, manufactured and packaged to deliver maximum productivity from your Agilent GC and GC/MSD systems. We strive to provide you with the cleanest, most inert flow path. From our proprietary deactivated inlet liners to our injection-molded inlet gold seal, through the J&W low-bleed columns, your samples are protected from exposure to active sites or outgassed contaminants that can alter your results.





Widest selection of inlets to optimize your separations

- Split/splitless (SSL) capillary
- Packed purged injection port (PPIP)
- Cool on-column (COC)
- Cool on-column with solvent vapor exit (COC-SVE)
- Programmable temperature vaporizing (PTV)
- Volatiles interface (VI)
- High temperature PTV
- High pressure gas sample injection
- LPG direct*
- Temperature-programmable precolumn*

High-sensitivity detectors for every sample type

- Mass selective (Agilent 5975 Series MSD)
- Flame ionization (FID)
- Thermal conductivity (TCD)
- Micro-electron capture (micro-ECD)
- Flame photometric, single- or dual-wavelength (FPD)
- Nitrogen-phosphorus (NPD)
- Sulfur chemiluminescence (SCD)
- Nitrogen chemiluminescence (NCD)
- Atomic emission (AED)*
- Pulsed flame photometric (PFPD)*
- Photoionization (PID)*
- Electrolytic conductivity (ELCD)*
- Discharge ionization (DID)*

*Available through Agilent Channel Partners

Contact Agilent for other custom configurations. A wide variety of additional solutions are available via Agilent's channel partners.

Agilent services let you focus on what you do best

Agilent's service organization is the most respected in the industry. Whether you need support for a single instrument or a multi-laboratory solution, we can help you solve problems quickly, increase your uptime and optimize your lab's resources. We offer:

- On-site preventive maintenance (PM) to ensure dependable operation and minimize unplanned downtime
- Troubleshooting, maintenance and repair for Agilent as well as non-Agilent instruments
- Remote diagnostic and monitoring services to maximize instrument uptime and lab productivity
- Expert consulting and training
- Cooperative support service

The Agilent Value Promise—10 years of guaranteed value.

In addition to continually evolving products, we offer something else unique to the industry—our 10-year value guarantee. The Agilent Value Promise guarantees you at least 10 years of instrument use from your date of purchase, or we will credit you with the residual value of that system toward an upgraded model. Not only does Agilent ensure a safe purchase now, we help ensure your investment is as valuable to you in the long run.

The Agilent Service Guarantee



Should your Agilent instrument require service while covered by an Agilent service agreement, we guarantee repair or we will replace your instrument for free. No other manufacturer or service provider offers this level of commitment to keeping your laboratory running at maximum productivity.